



Bellin College
IT Help Desk Guide

Bellin College Remote Desktop

Guide on how to log into the Bellin College Remote Desktop

Remote Connection Instructions

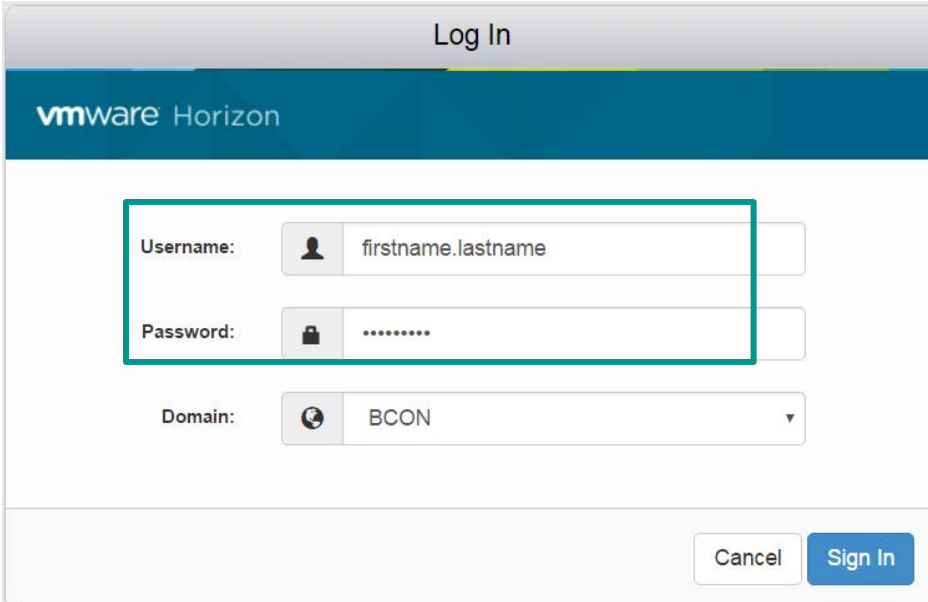
Step 1: Access the VMware Horizon connection selection page

Go to the following address in your web browser:

<https://remote.bellincollege.edu> This will take you to the VMware Horizon page:

Step 2: Log in with your usual Bellin College username and password.

Select BCON for the domain and click the Sign In button to proceed.



Log In

vmware Horizon

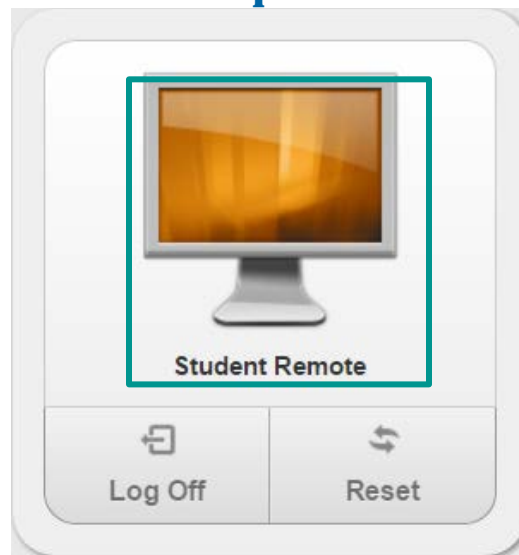
Username:

Password:

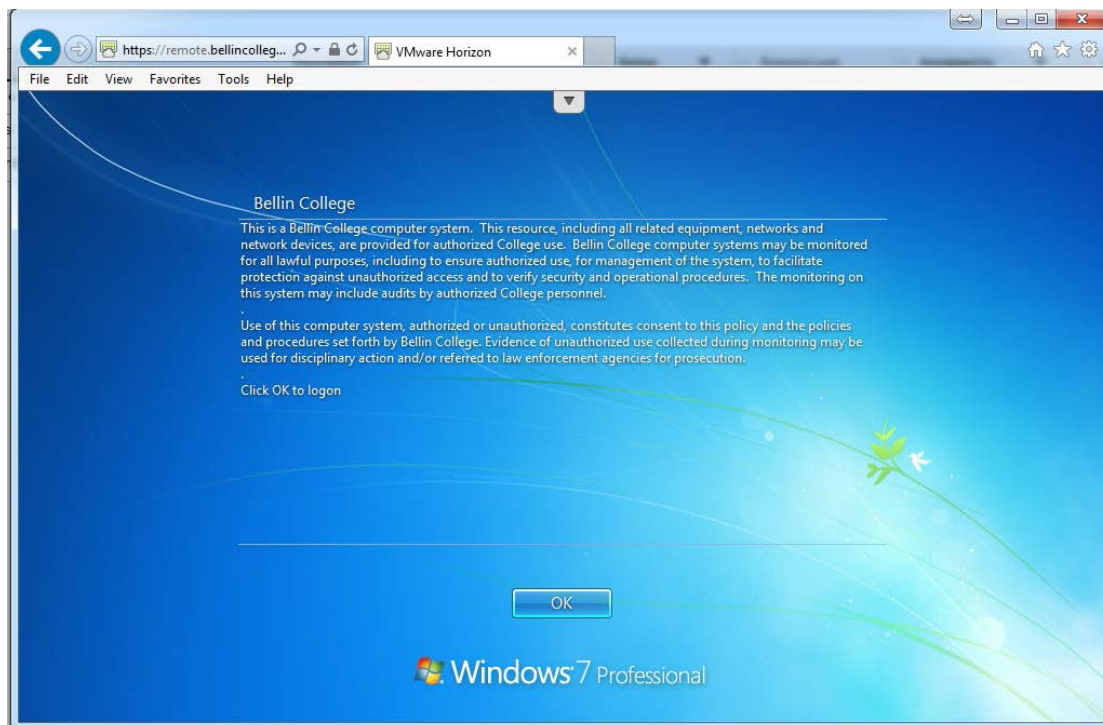
Domain:

Cancel Sign In

Step 3: You'll now see an icon with an image of a computer and the label **Bellin College Remote below it. Click the Remote Icon to proceed.**



You will now be logged into a Bellin College virtual desktop though your browser, as though you were on campus.



Step 4: Complete your work, Log off virtual desktop connection, and close the browser when you're finished.

Note: be sure to save any files you work on to the H: or S: drives. Anything saved to the C: drive will not be accessible from your work computer.

For Assistance

Please call the IT helpdesk at 920-433-6666 or email helpdesk@bellincollege.edu for assistance Monday – Friday between 7:30am and 5pm.